



Meat Technologies

Brochure

Mobile Solutions

On-Wheels | Modular | Containerized



'animal welfare-friendly on-farm slaughter'



CANTEK

MOBILE SLAUGHTER AND COOLING UNITS

Mobile slaughter units are great solutions for people having difficulties in finding modern and appropriate slaughter facilities for slaughter services close by. Our solution approach supports local farmers to handle their livestock without additional transfer and slaughter costs. The mobile units are configured to satisfy cattle, sheep, goat, poultry and pig slaughter + processing in a self-contained environment from start to finish and store the final products in mobile chilling rooms to keep the meat fresh in an uninterrupted cold chain.

The fully mobile on-wheels model is designed for individuals who wish to utilize the unit in various locations regularly and aim to generate revenue through their provided slaughter service.

The semi-mobile modular model caters to a target audience that can either employ the mobile unit with frequent location changes or opt for permanent installation at one location, with the primary goal of generating income from the meat and by-products resulting from the slaughter process.

The units are engineered for swift installation, offering the flexibility to either connect to on-site water and power supplies or fulfill all requirements through their own technical infrastructure.

The units are constructed using PU sandwich panels with a steel supporting structure, CTP, or standard container material. This allows for flexibility in shipping, as they can be transported either in a disassembled or assembled state.

Disassembled systems offer benefits for overseas transportation, whereas assembled systems are more advantageous for highway transport. Dismantled systems can be easily installed under our supervision using detailed assembly manuals as guides.

Mobile unit solutions provide cost-effective and humane treatment for animals. The animals stay in their familiar environment, experiencing no injury or stress prior to the slaughter process. The versatile unit operates with maximum flexibility, allowing users to operate it according to personal preferences, regardless of time or location.

Cantek offers mobile unit solutions for various applications, including the slaughtering process, meat deboning and packaging, offal cleaning, and the chilling, cooling, or blast freezing of final products in any shape.

The units are crafted to function as self-sufficient systems and can be combined to form customized processing plant structures.

MOBILE SLAUGHTER UNITS - ON WHEELS

FOR CATTLE/SHEEP&GOAT/PIG/POULTRY

TYPE: FULLY MOBILE



- ❖ All on-wheels units are self-contained, ensure food safety and prevent contamination in a secure processing setting by adhering to specific hygiene regulations.
- ❖ The on-wheels units comprise a towable trailer, so that it just needs to be connected to a locally sourced truck for transportation.
- ❖ All on-wheels units are 'plug-n-play' and ready for use upon delivery.
- ❖ All units are fully self-sufficient, thanks to an incorporated technical room.
- ❖ No civil, mechanical or electrical foundation is required.
- ❖ Suitable for daily use at any location, i.e. the backyard of a farm.

MOBILE SLAUGHTER UNIT-ON WHEELS

FOR CATTLE/SHEEP&GOAT/PIG/POULTRY

TYPE: FULLY MOBILE



FOR CATTLE

MODEL: M-SH-CATTLE-OW40
CAPACITY: MIN. 8 HEAD CATTLE/HOUR

FOR SHEEP & GOAT

MODEL: M-SH-SHEEP-OW100
CAPACITY: MIN. 12 HEAD SHEEP/HOUR



FOR PIG

MODEL: M-SH-PIG-OW80
CAPACITY: MIN. 10 HEAD PIGS /HOUR

FOR POULTRY

MODEL: M-SH-POULTRY-OW800
CAPACITY: MIN. 100 BIRDS/HOUR



MOBILE CATTLE SLAUGHTER UNIT - MODULAR M-SH-CATTLE-FX80

TYPE: SEMI-MOBILE CONTAINERIZED

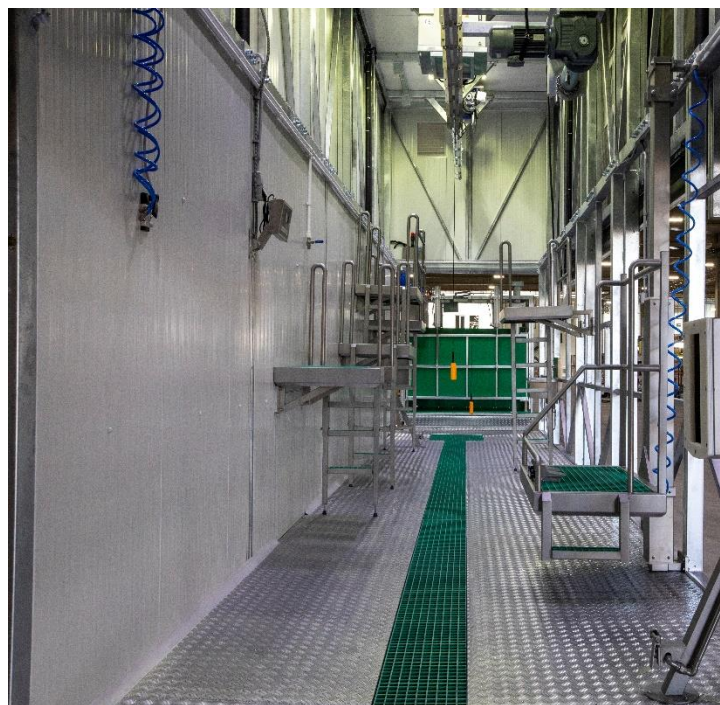


- ❖ A slaughter capacity at min. 12 head per hour.
- ❖ A fully equipped slaughter unit featuring operational power and water connections, designed to fulfil slaughter activities and eliminate any construction-related hassles for the user.
- ❖ Ready for use.
- ❖ Transport Option 1: Transported as one piece on a 3-Axles extensible low-bed trailer on highways.
- ❖ Transport Option 2: Dismantled shipment on 2 containers and installation on-site.

MOBILE CATTLE SLAUGHTER UNIT - MODULAR

M-SH-CATTLE-FX80

TYPE: SEMI-MOBILE CONTAINERIZED



MOBILE SLAUGHTER UNIT

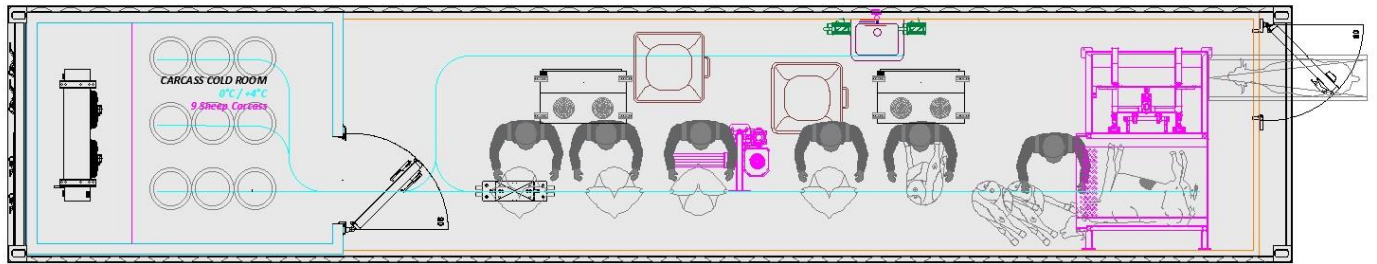
TYPE: SEMI-MOBILE CONTAINERIZED

FOR SHEEP & GOATS

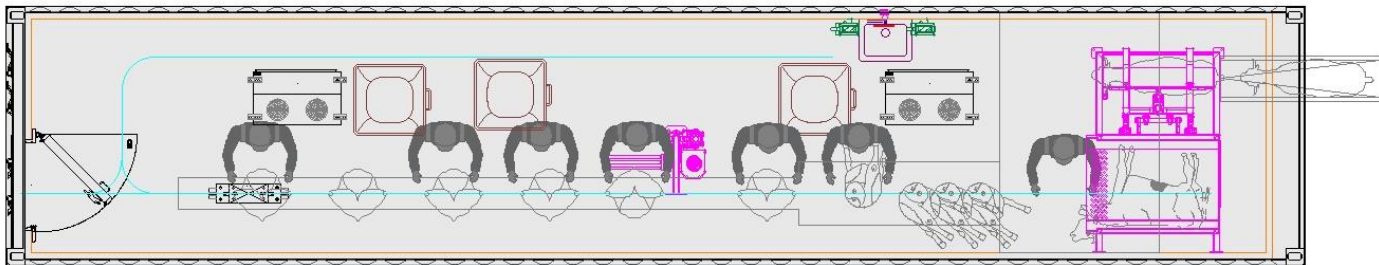
MODEL: M-SH-SHEEP-T1
CAPACITY: 8-10 SHEEP/HOUR

MODEL: M-SH-SHEEP-T2
CAPACITY: 10-15 SHEEP/HOUR

SHEEP SLAUGHTERING UNIT - T1
+18°C
8-10 Sheep/hour



SHEEP SLAUGHTERING UNIT - T2
+18°C
10-15 Sheep/hour



❖ Appropriate for small to medium-sized agricultural enterprises like farms and breeders aiming to enhance the value of their locally produced goods.

❖ A slaughter capacity at min. 10 head per hour.

❖ The cooling room accommodates 9 sheep.

❖ Containerized solutions are prepared for immediate deployment, reducing installation expenses and saves time.

❖ No necessity for construction permits or structural modifications.

❖ containerized setup featuring a cooling mechanism within a 40" HC container, readily operational

MOBILE SLAUGHTER UNIT

TYPE: SEMI-MOBILE CONTAINERIZED

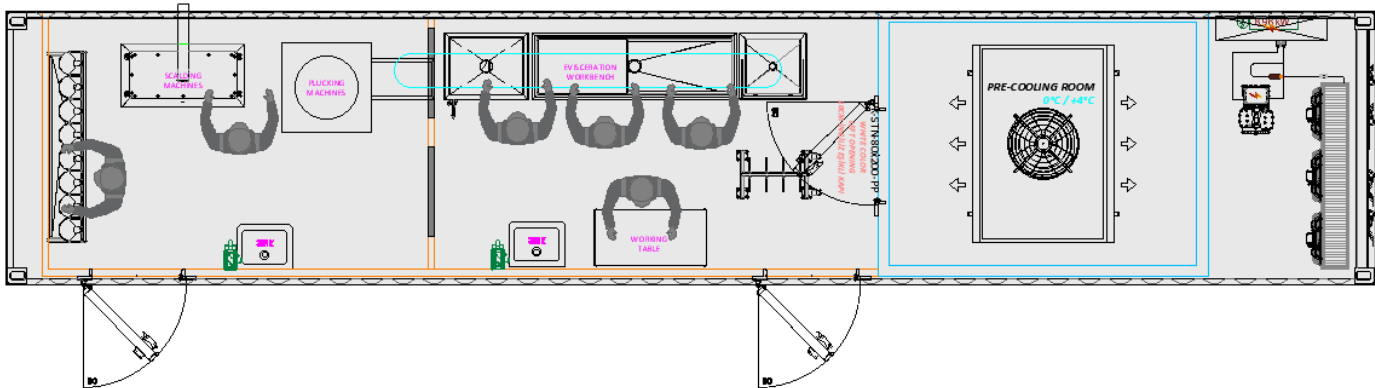


FOR POULTRY

MODEL: M-SH-POULTRY-T1

CAPACITY: MIN. 100 BIRDS/HOUR

POULTRY SLAUGHTERING UNIT
80-100 Chicken/hour



❖ These ready for use modular slaughter units can be installed quickly and easily, even in small spaces.

❖ The modular slaughter and processing unit are the ideal solution for small to medium-sized agricultural enterprises like farms and breeders aiming to enhance the value of their locally produced goods.

❖ No necessity for construction permits or structural modifications.

❖ The modular slaughter unit for poultry guarantees maximum efficiency at a comparably low investment cost.

MOBILE SOLUTIONS

COLD ROOMS

TYPE: SEMI-MOBILE CONTAINERIZED

CARCASS COLD ROOM

MODEL: M-CCR-T1
CAPACITY: 28-32 CATTLE QUARTER
CARCASS
OR 65-75 SHEEP CARCASS
MAX. 2.000 KG/DAY

COLD ROOM UNIT FRESH STORAGE (0°C + 4°C)

MODEL: M-CR-40FT
CAPACITY: 14 PALLETES

COLD ROOM UNIT FROZEN (-18°C)

MODEL: M-DF-40FT
CAPACITY: 14 PALLETES

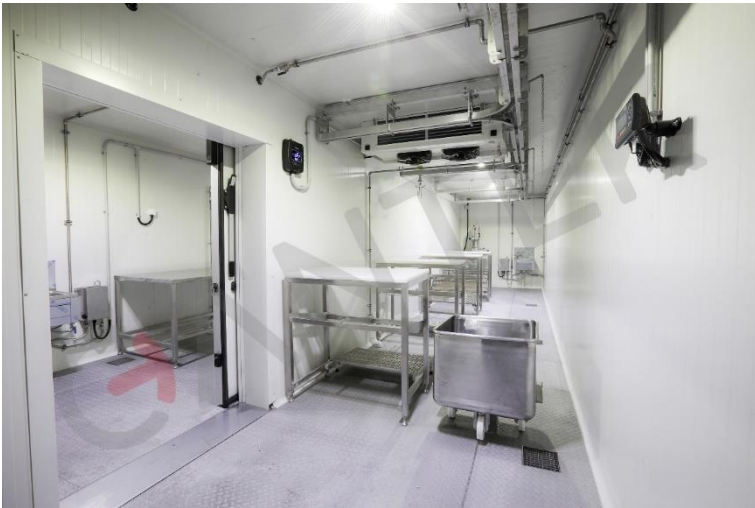
COLD ROOM UNIT BLAST FRE. (-35°C)

MODEL: M-BF-40FT
CAPACITY: 14 PALLETES



MOBILE PROCESSING UNIT

TYPE: SEMI-MOBILE CONTAINERIZED



CUTTING/DEBONING/CUT-UP UNIT

MODEL: M-CUTTING-T1

CAPACITY: 2 CATTLE CARCASS/HOUR OR
10-12 SHEEP CARCASS

OFFAL CLEANING UNIT

MODEL: M-OFFAL-T1



PACKAGING UNIT

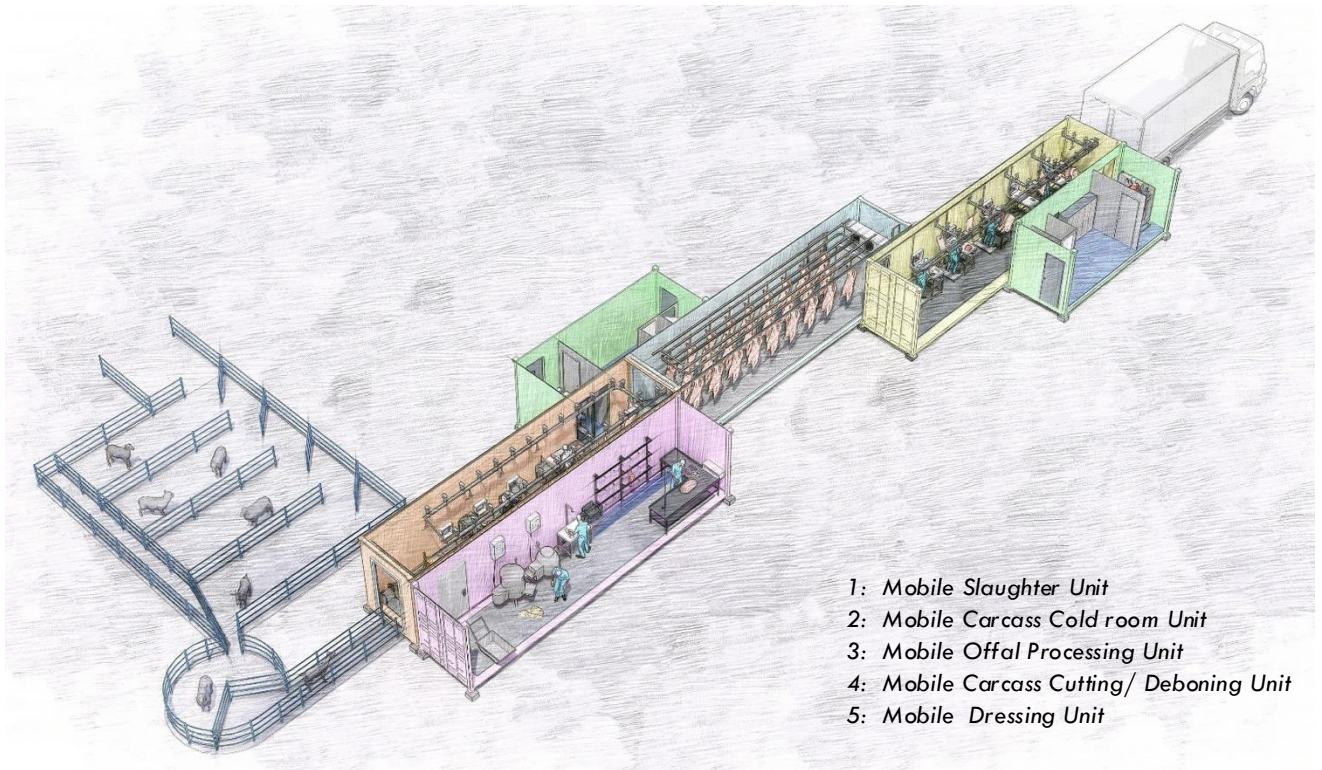
MODEL: M-PACKAGING-T1

COMBINED MOBILE SOLUTIONS

CONTAINERIZED & MODULAR SOLUTIONS

Create your customized plant –
unique | ultra-efficient | unparalleled

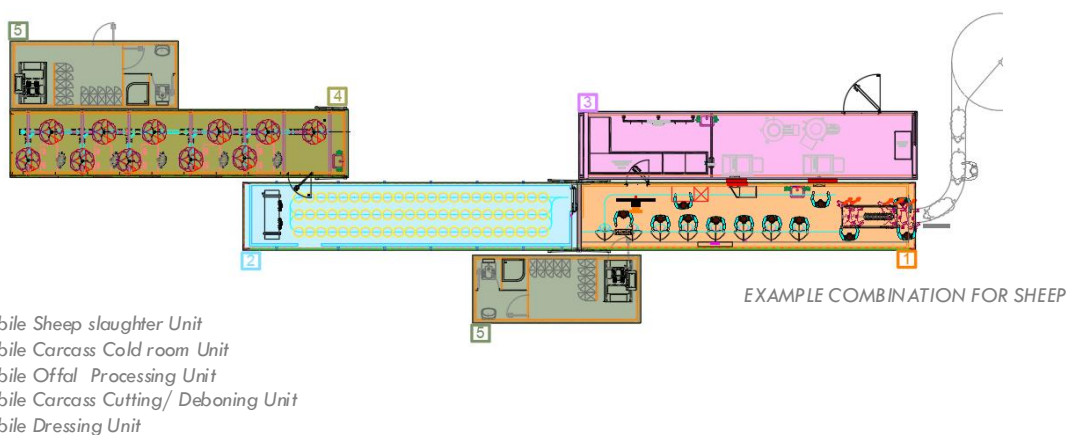
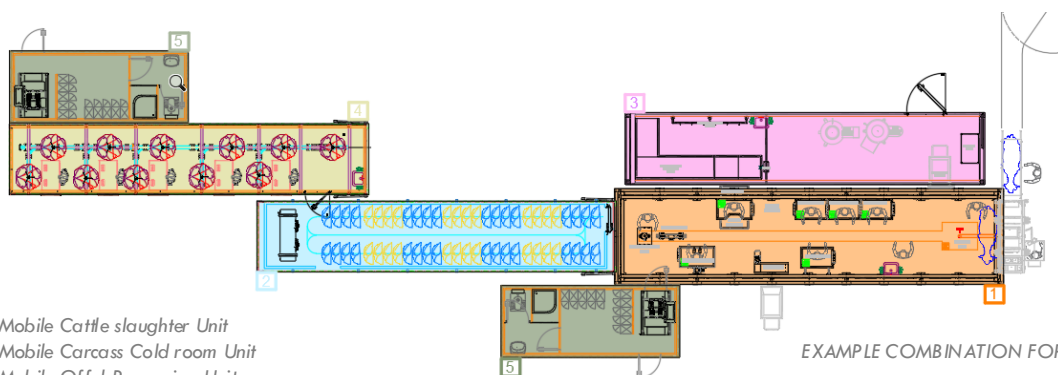
By integrating the modular slaughter units alongside supplementary units designed for various functions like storing carcasses in a cold room, cleaning offal, deboning meat, you can create a combined mobile unit solution that matches the quality of a modern meat processing plant!



COMBINED MOBILE SOLUTIONS

CONTAINERIZED & MODULAR SOLUTIONS

DRAFT COMBINED PLANTS



EXAMPLE COMBINATION FOR POULTRY

COMBINED MOBILE SOLUTIONS

REFERENCE PROJECTS FROM ALL AROUND THE WORLD



COMBINED MOBILE SOLUTIONS

REFERENCE PROJECTS FROM ALL AROUND THE WORLD



Mobil schlachten im Container

Mobile Schlachthöfe können eine Lösung für Betriebe sein, die weit entfernt vom nächsten Schlachthof liegen. Das spart nicht nur Transportwege- und -kosten, sondern vor allem schmalern sie auch den Stress für die Schlachttiere. **Cantek Meat Technologies** (Antalya, TUR), ein Anbieter für schlüsselfertige Lösungen in den Bereichen Kühlhaus, Schlachthof, Fleischverarbeitung und andere Fabriken, ist auf der IFFA mit einer Containerschlachthanlage für Schafe, Rinder und Geflügel auf dem Freigelände zwischen Halle 9 und Halle 11 vertreten. Cantek verwendet standardmäßige 40-Fuß-HC-Versandcontainer. Die Schlachteinheiten bestehen aus PU-Sandwichplatten mit Stahlträgern und können montiert oder zerlegt versandt werden. Zerlegte Bausysteme können mit detaillierten Montageanleitungen einfach wieder zusammengebaut werden. Die Schlachteinheiten lassen sich einfach an die bauseitige Wasser- und Stromversorgung anschließen.

Cantek Meat Technologies / Freigelände F11 / A10

Mobile slaughtering – in a container

Mobile slaughterhouses can be a solution for farms that are located far away from the nearest slaughterhouse. This saves transportation and costs, but above all it reduces the stress for the animals before they are slaughtered. Cantek Meat Technologies (Antalya, TUR), a provider of turnkey solutions for cold storage, slaughterhouses, meat processing and other facilities, is displaying a container slaughterhouse for sheep, cattle and poultry in the outdoor area between halls 9 and 11 at IFFA. Cantek uses standard 40-foot HC shipping containers. The slaughtering units consist of polyurethane sandwich panels with steel supports, and can be shipped in assembled or disassembled form. Disassembled systems are ideal for overseas transport, while the assembled slaughtering system can be moved by truck. The slaughtering units are then simply connected to the local water and power supply once in position.

Cantek Meat Technologies / Outdoor area F11/ A10

Cantek Group mira a Perú y Latinoamérica

La empresa de Turquía destacó con su cámara frigorífica móvil y un congelador de contenedores móviles para el almacenamiento de carcasas de vacunos, ovinos, cerdos o carne en cortes especiales. Así como con sus camales estacionarios y móviles, para beneficiar vacunos, ovinos, caprinos, pollos. Igualmente ofrece plantas de procesamiento de despojos, de trituración y procesamiento de pescado, todas en contenedores portátiles. Estos productos son ideales para la realidad geográfica y ganadera del Perú, la cual permitiría beneficiar el ganado en los mismos centros de producción en vez de trasladarlos vivos y a grandes distancias como sucede hoy.

Los interesados en entablar contactos de representación o comprar, comunicarse con el presidente de Cantek, Sr. Tarik Isguzar, vía correo electrónico: tarik.isguzar@cantekgroup.com

AGROPERU, 2022 | PERU

FRANKFURTER DAILY, 2022 | GERMANY



30th RMAA Conference and Congress 2024

On behalf of the Board of the Red Meat Abattoir Association

we wish to thank all delegates, sponsors & exhibitors for their attendance and support during the RMAA Conference & Congress 2024. We express our gratitude to all the speakers for their invaluable contributions to our event.

RMAA CONFERENCE, 2024 | SOUTH AFRICA



COMBINED MOBILE SOLUTIONS

REFERENCE PROJECTS FROM ALL AROUND THE WORLD

Mobile abattoir draws interest at Sommet show in France



Breifne O'Brien

October 10, 2023 6:00 am



Service and installation manager at CanteK red meat technologies Yakup Kaya

A Turkish-based firm supplying small-scale mobile livestock slaughtering systems had a display at the Sommet de l'Élevage agricultural show last week.

The firm CanteK Meat Technologies had various different systems on display with each system designed to process different types of livestock. Mobile slaughter units for poultry, pigs, sheep and cattle could be seen.

Speaking to *Agriland* at Sommet 2023, service and installation manager at CanteK red meat technologies Yakup Kaya said that the company can provide "every system" needed for both large and small-scale processing facilities.

The photo below shows how the modular units can be fitted together to offer more processing options:



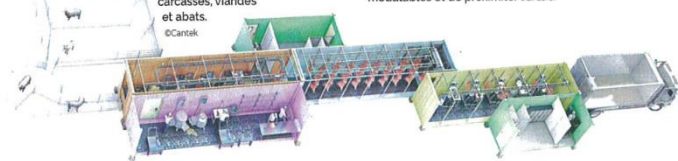
AGRILAND, 2023 | IRELAND

technique EQUIPEMENT

CanteK propose un abattoir nomade dont chaque module héberge une étape du processus de gestion des carcasses, viandes et abats.



Les équipes de GDS international et de CanteK meat technologies échantent sur des solutions d'abattage modulaires et de proximité. ©B. Carrel



La société turque CanteK meat technologies, après une présence remarquée au Sommet de l'élevage 2023, a présenté ses solutions d'abattage mobiles et modulaires le 22 février lors d'une réunion en Aveyron, répondant à l'invitation de GDS international.

Abattage: des solutions innovantes modulaires et mobiles

Michel Combes, vice-président de GDS international, a rappelé l'action de cette structure, dont le président actuel est Gilles Lavollée. « GDS international a été créé pour promouvoir et exporter le modèle sanitaire français, dont le système de traçabilité alimentaire est unique au monde. Nous avons également pour mission d'accompagner ceux qui le souhaitent pour améliorer la sécurité sanitaire des aliments. Dans cette optique, nous évaluons l'abattage mobile comme opportunité dans des zones pauvres en abattoirs, même en France métropolitaine. Un tel équipement peut ainsi répondre à la double problématique de la sécurité sanitaire et du bien-être animal. »

UNE MODULARITÉ EXTRÊME

CanteK est un constructeur de solutions mobiles d'abattage et d'unités de transformation des viandes, fort de trente-deux ans d'expérience et de 15 000 projets dans

76 pays. L'entreprise turque possède des installations adaptées à toutes les espèces de ruminants, ainsi que les porcs et les volailles. « Notre système est basé sur une extrême modularité et une adaptabilité à chaque projet du client », explique Cansu Caliskan, la responsable du développement. Le principe est un assemblage de conteneurs, qui s'imbriquent comme des legos et peuvent héberger toutes les étapes de l'abattage, jusqu'au conditionnement. « Chaque unité est autonome et possède son propre volume de stockage des déchets et des eaux sales. Nous sommes ainsi capables en peu de temps de monter une usine entière clé en main. » L'entreprise vient d'ailleurs d'installer le plus grand abattoir modulaire au monde en Mongolie.

UN ABATTOIR « SUR ROUES »

En 2016 le groupe a développé une unité entièrement mobile, parvenant même à l'autonomie énergétique. Selon l'entreprise, cet abat-

toir « sur roues » pourrait traiter en une heure cinq bovins, douze ovins, dix porcs ou une centaine de volailles. Une chambre de réfrigération peut également être acheminée conjointement. La présentation de ces équipements a suscité beaucoup de réactions dans l'assistance composée d'éleveurs, de salariés de la DDPP (direction départementale de la protection des populations) et d'élus de territoire. Certains

y voient une grande opportunité pour les éleveurs qui commercialisent leur viande en direct, soucieux de réduire le stress de leurs animaux, d'autres affichent des freins en matière de budget et d'adaptation aux normes européennes. Pour répondre à cette dernière problématique, une unité CanteK pour les bovins est en expérimentation au sein d'une université allemande. ©

Bérangère Carrel



Vente de béliers, d'agnelles et de semences



Race Ile de France

- Précocité
- Adaptabilité
- Désaisonnement



Race Texel

- Prolifique et laitière
- Conformée
- Saisonnée et rentable

Tél : 03.23.69.15.94
Mail : stverdilly@wanadoo.fr
Site : oson-gof.com

REUSSIR PATRE, 2024 | FRANCE





46, Galmaesunhwan-ro 166beon-gil,
Guri-si, Gyeonggi-do,
Republic of Korea (11901)

Tel +82-31-522-6786

www.cantekkorea.com